



neolab Migge GmbH  
Rischerstr. 7-9  
69123 Heidelberg  
Deutschland  
+49 (0)6221 /  
8442-44  
<https://www.neolab.de>  
e

Umsatzsteuer-  
Identifikationsnummer  
:  
DE 143 450 657



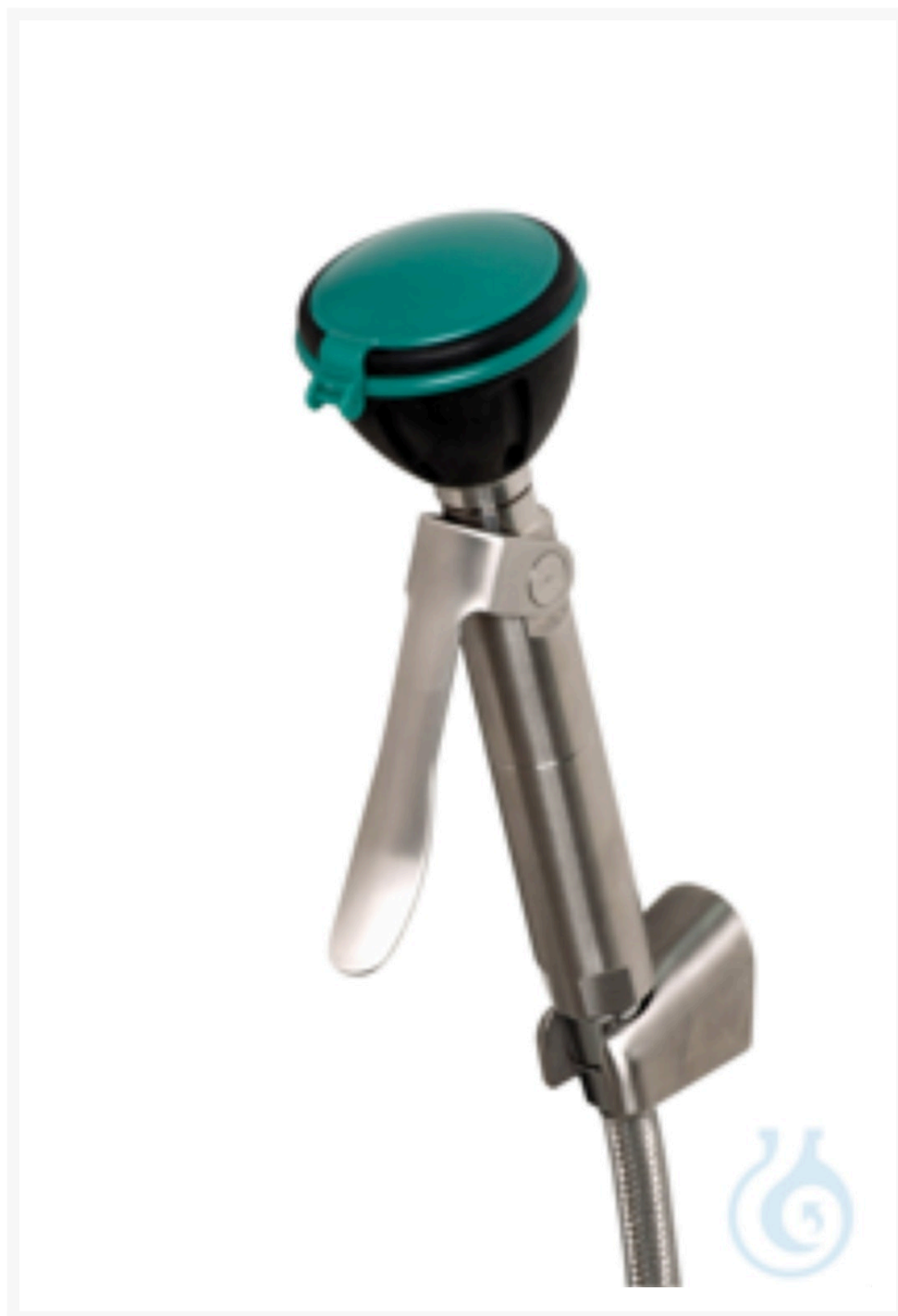
---

**B-SAFETY® PremiumLine hand-held eye shower  
made of stainless steel with one shower head -  
wall mounted**

**€375.00  
plus VAT &  
Shipping**

## Product Images

---



## Description

---

Product features - media-carrying parts made of stainless steel - handle with large, locking release lever made of stainless steel, polished, valve does not close automatically - wide-jet high-performance shower head made of stainless steel, polished, with plastic spray plate, low calcification, incl. rubber protection and tightly closing dust cover with flap mechanism. Integrated automatic flow regulator 7 liters / minute for a standard-compliant spray pattern at a specified working range of 1.5 to 5 bar flow pressure - integrated backflow preventer to protect the drinking water - stainless steel coated hose length 1.5 meters, connection 1/2-inch union nut, DIN-DVGW tested and approved - stable wall bracket 20 ° angled stainless steel, polished, incl. 2x large mounting holes. 2x large fixing holes - information sign for eye shower according to DIN EN ISO 7010 and ASR A1.3, self-adhesive PVC foil, dimensions 100 x 100 mm, recognition distance 10 meters - mounting height 770 mm ( $\pm 200$  mm) - according to BGI/GUV-I 850-0, DIN 1988 and DIN EN 1717 - according to ANSI Z358.1-2014 and DIN EN 15154-2:2006 - DIN-DVGW tested and approved Make: B-SAFETY or equivalent Technical data - Minimum flow pressure: 1.5 bar - Operating pressure: 1.5 to 5 bar - Volume flow: 7 liters/min. - Water connection: 1/2-inch IG

## Additional Information

---

No.	FG-0238
Manufacturer (Brand)	B-SAFETY
Transport temperature	Room temperature

