



neolab Migge GmbH
Rischerstr. 7-9
69123 Heidelberg
Deutschland
+49 (0)6221 /
8442-44
<https://www.neolab.de>
e

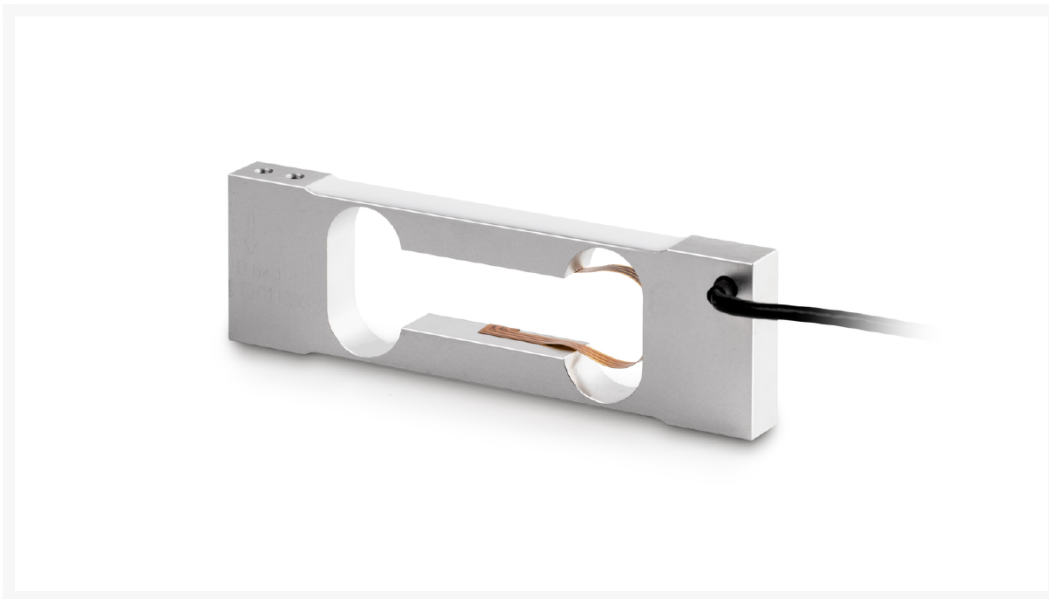
Umsatzsteuer-
Identifikationsnummer
:
DE 143 450 657



KERN® load cell, not OIML certified

**Price on
request
plus VAT &
Shipping**

Product Images



Description

Measuring cell SAUTER CP 3000-0Y4, OIML class, C3, weighing range 3 kg

Additional Information

No.	KP-9836
Manufacturer (Brand)	KERN
Transport temperature	Room temperature

