



neolab Migge GmbH  
Rischerstr. 7-9  
69123 Heidelberg  
Deutschland  
+49 (0)6221 /  
8442-44  
<https://www.neolab.de>  
e

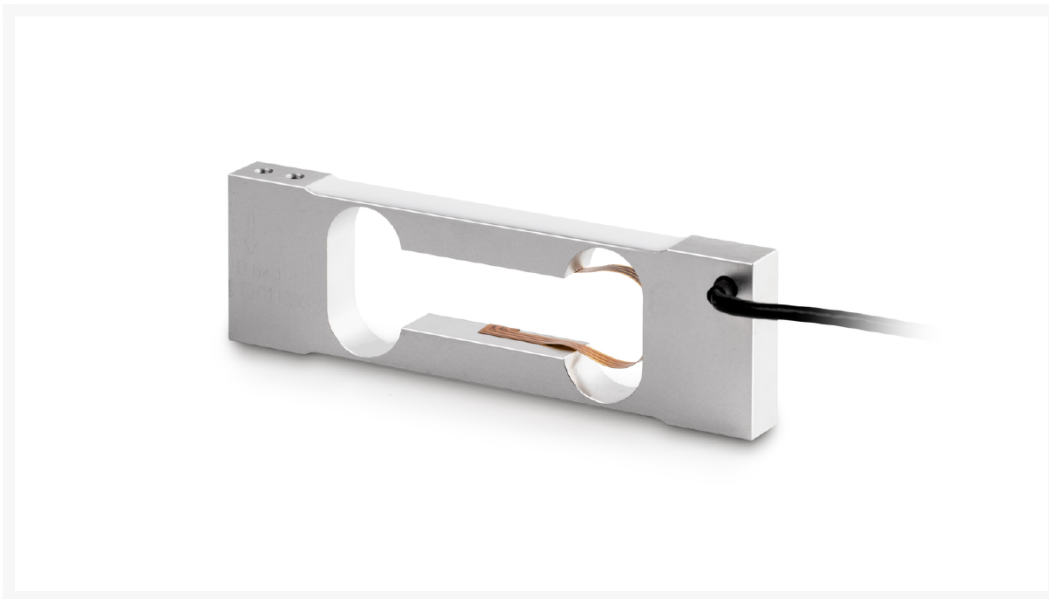
Umsatzsteuer-  
Identifikationsnummer  
:  
DE 143 450 657



## KERN® load cell, not OIML certified

**Price on  
request  
plus VAT &  
Shipping**

### Product Images



## Description

---

Measuring cell SAUTER CP 1500-0Y4, OIML class, C3, weighing range 1.5 kg

## Additional Information

---

No.	KP-9833
Manufacturer (Brand)	KERN
Transport temperature	Room temperature

