



neolab Migge GmbH
Rischerstr. 7-9
69123 Heidelberg
Deutschland
+49 (0)6221 /
8442-44
<https://www.neolab.de>
e

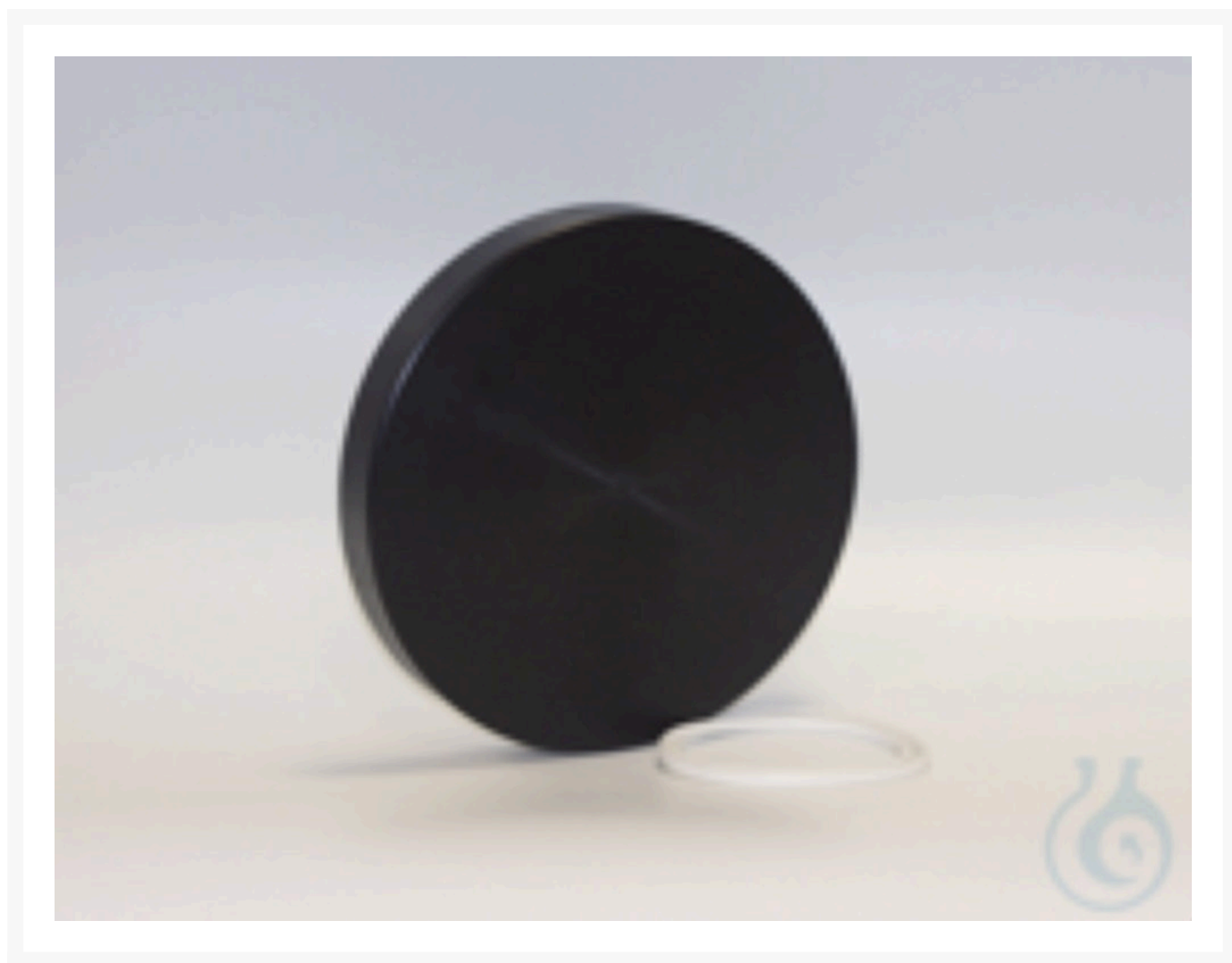
Umsatzsteuer-
Identifikationsnummer
:
DE 143 450 657



Bohlender® SICCO Closure Cover for Engagement Opening Ø 215 x 30

€185.28
plus VAT &
Shipping

Product Images



Description

SICCO closing lid for access opening Closing lid with cord seal. Protection against contamination (e.g. dust particles in the ambient air) by simply placing it on the access opening of your SICCO glove box. The supplied seal

Additional Information

No.	ER-2285
Manufacturer (Brand)	Bohlender
Transport temperature	Room temperature

