



neolab Migge GmbH
Rischerstr. 7-9
69123 Heidelberg
Deutschland
+49 (0)6221 /
8442-44
<https://www.neolab.de>
e

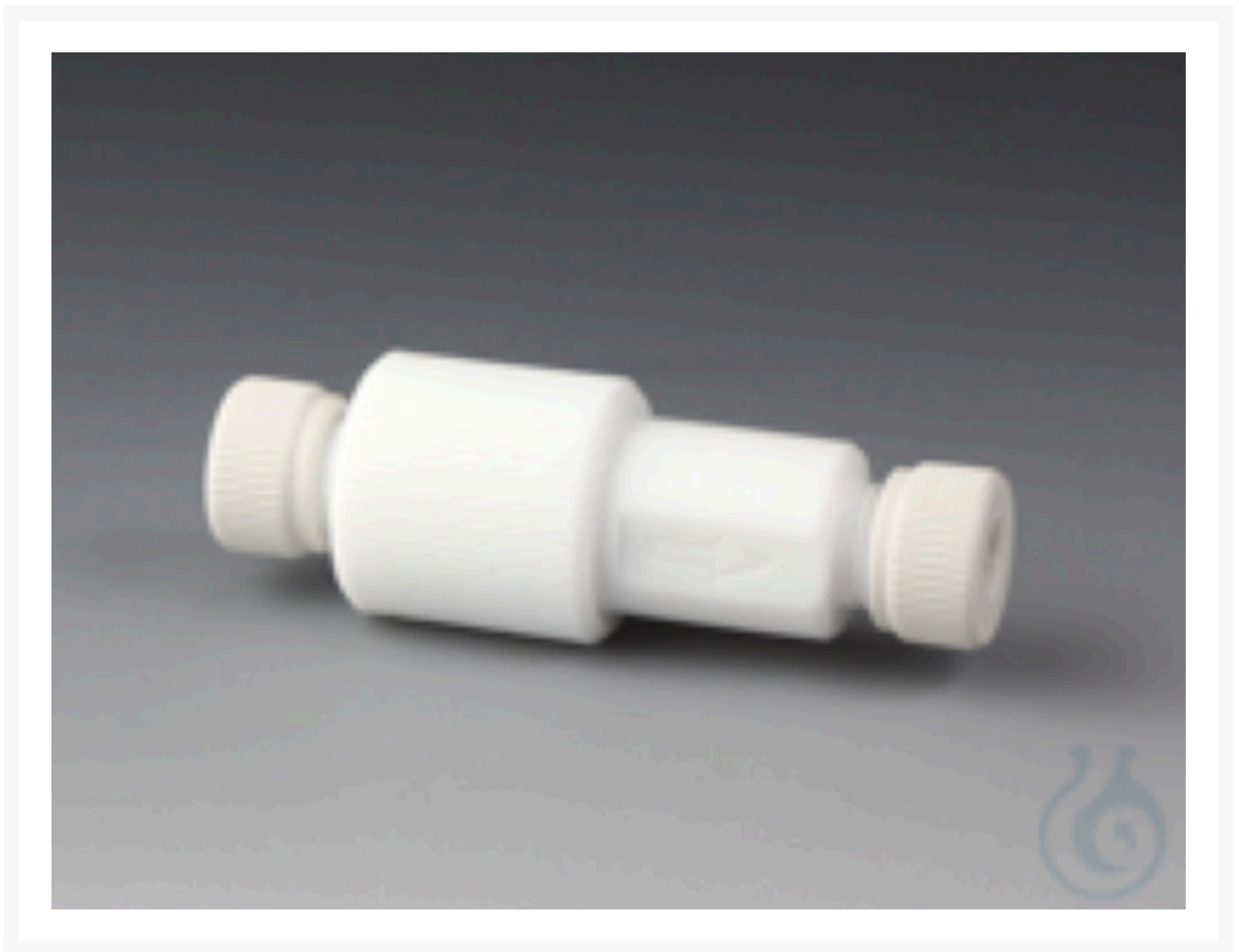
Umsatzsteuer-
Identifikationsnummer
:
DE 143 450 657



Bohlender® BOLA check valves Ø 8 mm

€301.37
plus VAT &
Shipping

Product Images



Description

BOLA check valves Made of PTFE, with nuts made of PTFE glass fiber for connection to pipes or hoses. Opening pressure adjustable from 0.1 to max. 2 bar, factory setting 0.1 bar. The built-in shut-off function allows flow in only one R

Additional Information

No.	ER-1386
Manufacturer (Brand)	Bohlender
Transport temperature	Room temperature

