



neolab Migge GmbH
Rischerstr. 7-9
69123 Heidelberg
Deutschland
+49 (0)6221 /
8442-44
<https://www.neolab.de>
e

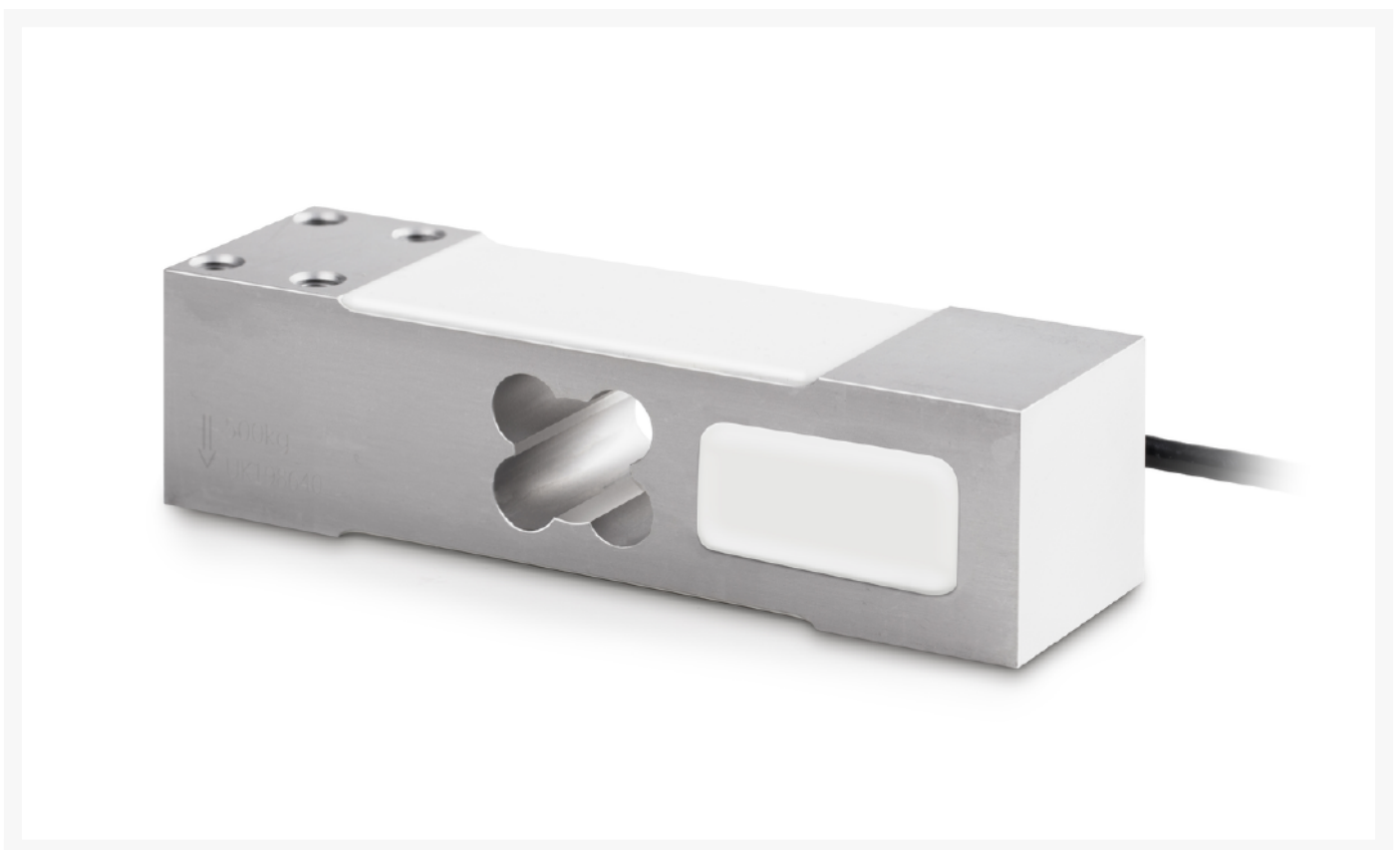
Umsatzsteuer-
Identifikationsnummer
:
DE 143 450 657



KERN load cell 100 kg

**Price on
request
plus VAT &
Shipping**

Product Images



Description

- Accuracy according to OIML R60 C3
- Dust and splash water protection IP65 (according to EN 60529)
- Aluminum alloy, anodized
- Suitable for price computing scales, bench scales, platform scales etc.
- Maximum platform size 100-300 kg: 400×400 mm
- Maximum platform size 400-500 kg: 450×450 mm
- Nominal sensitivity: 2 mV/V
- Note: Version according to OIML R60 C4 or C5 on request

Additional Information

No.	KP-2602
Manufacturer (Brand)	KERN
EAN	4058072131197
Transport temperature	Room temperature
Manufacturer	CORE

