



neolab Migge GmbH
Rischerstr. 7-9
69123 Heidelberg
Deutschland
+49 (0)6221 /
8442-44
<https://www.neolab.de>
e

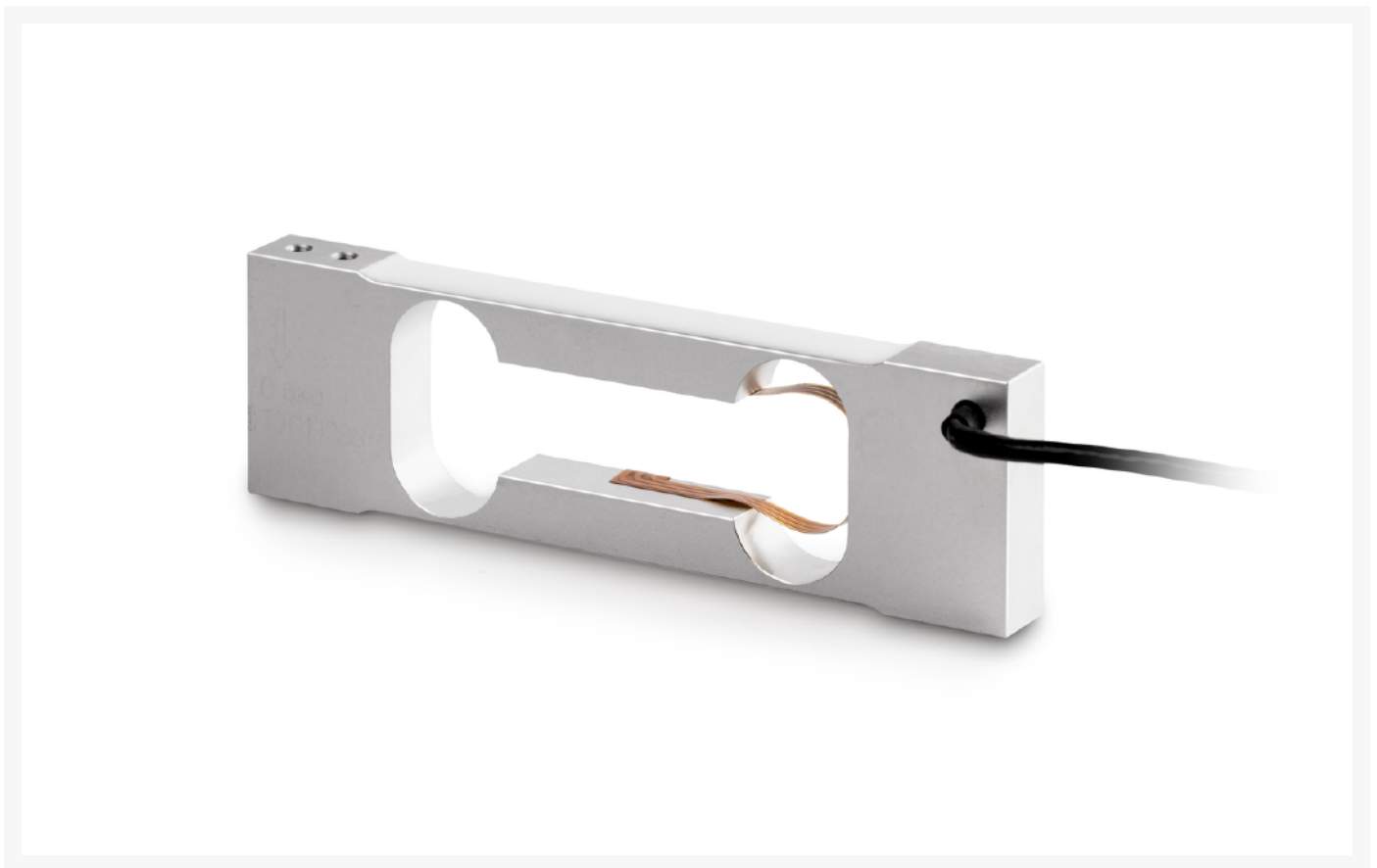
Umsatzsteuer-
Identifikationsnummer
:
DE 143 450 657



KERN load cell not OIML certified

**Price on
request
plus VAT &
Shipping**

Product Images



Description

- CE and RoHS compliant
- Accuracy class L
- Dust and splash water protection IP65 (according to EN 60529)
- Aluminum, anodized
- Suitable for price computing scales, bench scales, platform scales etc.
- Maximum platform size 200×200 mm
- 4-wire connection
- Nominal sensitivity: 0.9 mV/V

Additional Information

No.	KP-0313
Manufacturer (Brand)	KERN
EAN	4058072125141
Transport temperature	Room temperature
Manufacturer	CORE

