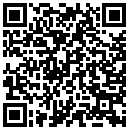




neolab Migge GmbH
Rischerstr. 7-9
69123 Heidelberg
Deutschland
+49 (0)6221 /
8442-44
<https://www.neolab.de>
e

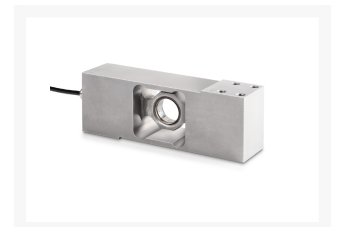
Umsatzsteuer-
Identifikationsnummer
:
DE 143 450 657



KERN load cell single point load cell hermetically sealed

**Price on
request
plus VAT &
Shipping**

Product Images



Description

- Accuracy according to OIML R60 C3
- Dust and splash water protection IP68/IP69K (according to EN 60529), hermetically welded
- Stainless steel
- Field of application: mass as well as pressure force measurements under harsh environmental conditions
- Suitable for platform scales, checkweighing
- Maximum platform size 10-50: 400×400 kg
- Maximum platform size 100-500 kg: 800×800 mm
- 4-wire connection (10-50 kg)
- 6-wire connection (100-500 kg)
- Nominal characteristic value: 2 mV/V
- Note: Version according to OIML R60 C4 or C5 on request

Additional Information

No.	KP-0451
Manufacturer (Brand)	KERN
EAN	4058072125738
Transport temperature	Room temperature
Manufacturer	CORE

