



neolab Migge GmbH  
Rischerstr. 7-9  
69123 Heidelberg  
Deutschland  
+49 (0)6221 /  
8442-44  
<https://www.neolab.de>  
e

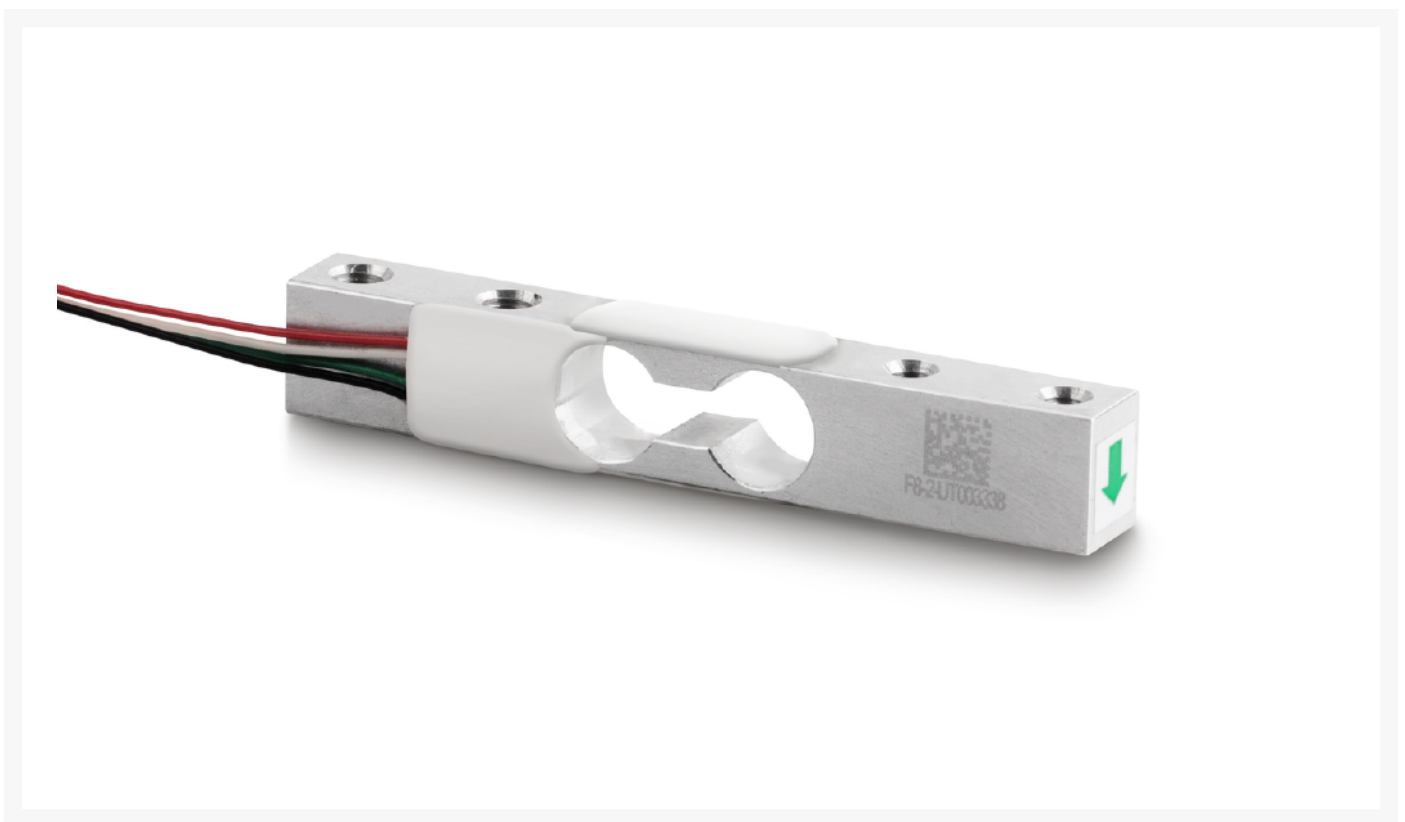
Umsatzsteuer-  
Identifikationsnummer  
:  
DE 143 450 657



## KERN load cell 2 kg

**Price on  
request  
plus VAT &  
Shipping**

### Product Images



## Description

---

- Dust and splash water protection IP65 (according to EN 60529)
- Aluminum
- High accuracy
- Suitable for small scales, kitchen scales and force gauges
- 4-wire connection

## Additional Information

---

No.	KP-3479
Manufacturer (Brand)	KERN
EAN	4058072134433
Transport temperature	Room temperature
Manufacturer	CORE

