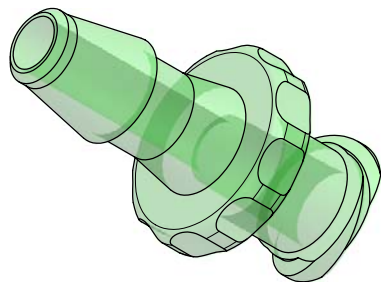
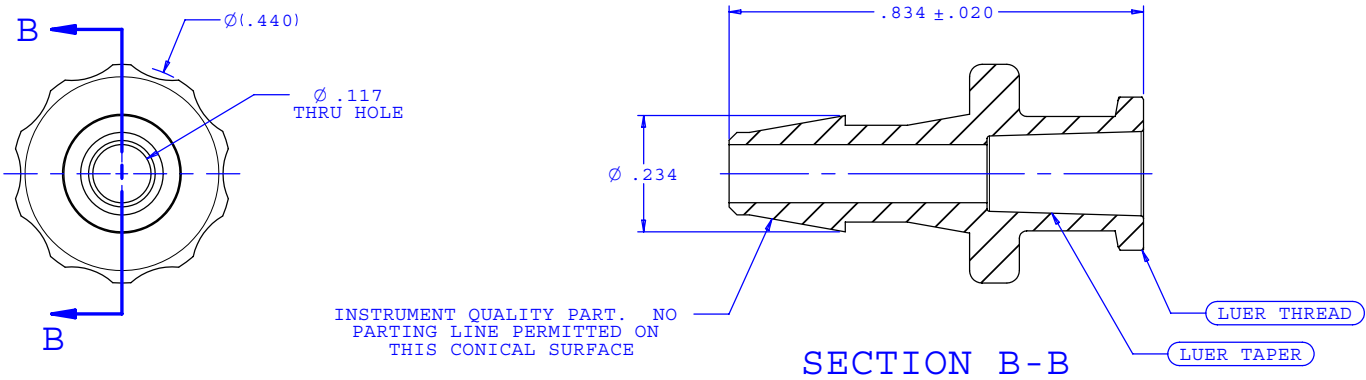


NOTE: FOR MORE DETAILS SEE YOUR V.P.CUSTOMER SERVICE REP.

REVISIONS			
REV.	DESCRIPTION	DATE	APPROVED
A	INITIAL RELEASE	12-13-02	
B	CO 013 Drafting Update	05-02-05	Rick C.



UNLESS OTHERWISE SPECIFIED DIMENSIONS ARE IN INCHES TOLERANCES ARE:  FRACTIONS      DECIMALS      ANGULAR ±                .XX    ±.01        ±1° .XXX   ±.005 .XXXX   ±.001  DO NOT SCALE DRAWING			<b>VALUE PLASTICS, INC.</b>		
DRAWN BY:                      DATE: <b>Frank Lombardi 4-18-05</b>  Engineer Manager: <b>Rick Cairns</b>			PART NUMBER: <b>2-1889</b>		
			DESCRIPTION:    Female Luer Thread Style to 200 Series Barb, 5/32" (4 mm) ID Tubing		
SIZE: <b>B</b>		SCALE: <b>NTS</b>	DRAWING NUMBER: <b>1005577</b>	REV. <b>B</b>	SHEET: <b>1 OF 1</b>

FOR REFERENCE ONLY